

Rebates and Incentives

Get money back for your business!

Improving the energy efficiency of your building is a smart investment. Even simple improvements can dramatically reduce energy costs and improve the quality and comfort of employees and tenants. Pacific Gas and Electric Company (PG&E) wants to help you invest in your building through rebates and incentives designed to make energy efficiency more affordable, more manageable and easier than ever.

Visit pge.com/rebatesforbusiness to learn more.

Results worth talking about

2015 savings and additional benefits from PG&E's rebates and incentives programs include:

- 772 GWh in avoided energy consumption*, which is equal to about half of what San Francisco residents consume in a whole year!**
- Improved systems for operators and engineers
- Increased value and satisfaction for tenants, building owners and property managers

Eligible technologies for rebates and incentives

- Heating and Cooling systems
- Office Equipment
- Lighting
- Compressed Air
- Food Service Equipment
- Refrigeration

* PG&E 2015 Annual Report

** Energy Consumption Data Management System 2015

Support your goals

1. UPGRADE SYSTEMS

By replacing old equipment with new, more efficient models, you can reduce maintenance costs and gain energy savings that unlock resources to help you invest in more productive areas of your business.

2. REDUCE ENERGY WASTE

Provide a clean and sustainable work environment by only paying for the energy you need with optimized equipment.

3. IMPROVE PERFORMANCE

New models not only save energy costs, but also create a better workplace environment through the use of cutting edge technology and significantly impacts employee satisfaction and retention rates.

4. INCREASE VALUE

A more efficient, higher performing building adds value to owners and tenants by creating a healthier, more comfortable, and safer environment, which leads to more productive employees.

Get started today!

A PG&E Engineer can help you identify project opportunities, including potential costs, savings and payback. Contact your Step Up and Power Down Engagement Manager or your PG&E Account Representative to get started on a project you have in mind or to learn about your eligibility for an audit.

Deemed Rebates

Receive a set amount per piece of eligible equipment purchased and installed.

Step 1

**SELECT QUALIFIED
ITEM FROM CATALOG AT**
pge.com/businessrebates

Step 2

**PURCHASE AND
INSTALL ITEM**

Step 3

**COMPLETE AND
SUBMIT APPLICATION**

Step 4

RECEIVE REBATE

Customized Incentives

Receive an incentive amount tailored to your unique energy efficiency project. The more you save, the more you earn. Customized incentives have a longer application process than deemed rebates and require pre-approval before you purchase equipment. Contact your PG&E Account Representative to get started.

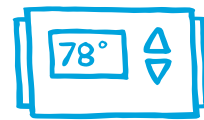
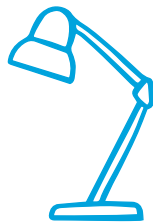
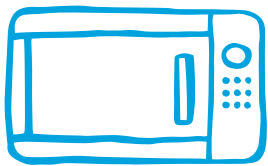
Gas Incentive	\$1.00/therm	
kW Incentive	\$150/kW	
	Basic	Targeted
Lighting	\$0.03/kWh	\$0.08/kWh
Non-Lighting	\$0.08/kWh	\$0.15/kWh

As of April 2016. Subject to funding availability and eligibility requirements.

Energy Efficiency Financing

Pay for an energy efficiency upgrade through your utility bill with no interest.

- 0% interest loan
- Loan amount calculated to match estimated utility bill savings from retrofit, which could result in a net neutral (i.e. unchanged) total bill
- Loan paid through your monthly utility bill
- \$100,000 loan amount for commercial customers
- \$250,000 loan amount for municipal customers



SAN JOSE

**STEP UP AND
POWER DOWN**

SanJose.StepUpandPowerDown.com

f [/StepUpAndPowerDown](https://www.facebook.com/StepUpAndPowerDown) t [@StepUpPowerDown](https://twitter.com/StepUpPowerDown)

#StepUpPowerDown



Together, Building
a Better California

*Requires pre-approval and/or PG&E calculations to identify incentive amount

"PG&E" refers to Pacific Gas and Electric Company, a subsidiary of PG&E Corporation. ©2016 Pacific Gas and Electric Company. All rights reserved. This program is funded by California utility customers and administered by PG&E under the auspices of the California Public Utilities Commission. CSB-0416-5830